



COCKPITFORYOU

READY TO TAKE OFF

INSTALLATION MANUAL FOR USING YOUR THROTTLE V3,V4,V5

Version 1.7.00



23. March 2023 www.cockpit-for-you.com

Torsten Mueller

Installation manual for using your TQ

Thank you for purchasing the motorized version V3 of our new COCKPITFORYOU 737 throttle quadrant. It has been assembled and tested with the greatest care. To make the installation as convenient as possible for you, we tried to describe the installation process in great detail. Should you still experience difficulties with the setup or operation of your throttle quadrant, please do not hesitate to contact us via email or phone. In the near future we will release a video setup tutorial in addition to this manual that will guide you through all the necessary steps.

We hope you will have as much fun flying your new TQ as we had engineering and assembling it.

1. Before getting started

- download CFY_TQ.zip latest version
- <https://cockpitforyou.com/instructions>

2. Connecting your Throttlew

Your motorized butterfly comes with 1 Ethernet port
and 1 female PC power supply.
PC power supply (90-250V / 50-60Hz)

3. Please remove the protective covers for network coupler and potentiometer for backlight brightness adjustment.



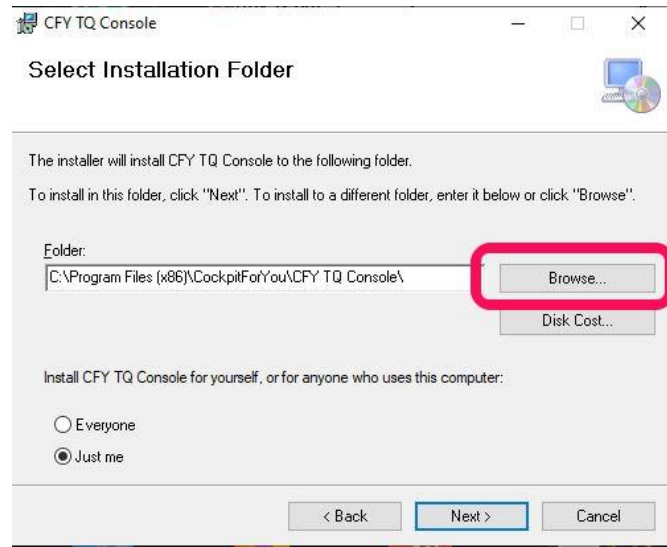


Ethernet cable: Plug in the Ethernet cable into a free port of an Ethernet switch.
Minimum requirement for switch is 100 Mbit.

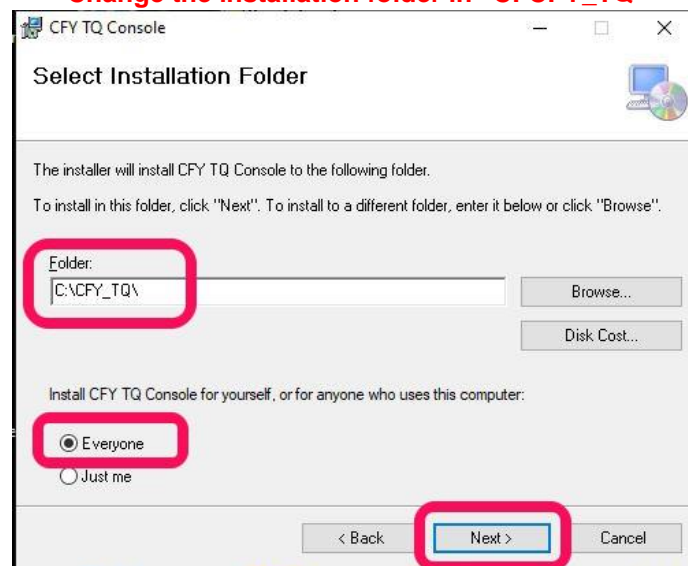
3. installation software

1. Create new folder "CFY" on drive C:
2. Extract CFY_TQ.zip to C: CFY
3. Create new folder "CFY_TQ" on drive C:
4. In the folder C:\CFY double click the file "setup"

<input type="checkbox"/> Name	Änderungsdatum	Typ	Größe
CFY TQ Console no Simconnect V1.9.2.zip	04.03.2021 16:58	WinZip File	3.397 KB
CFY TQ_Setup.msi	02.03.2021 09:14	Windows Installer-Pa...	3.916 KB
setup.exe	02.03.2021 09:14	Anwendung	518 KB

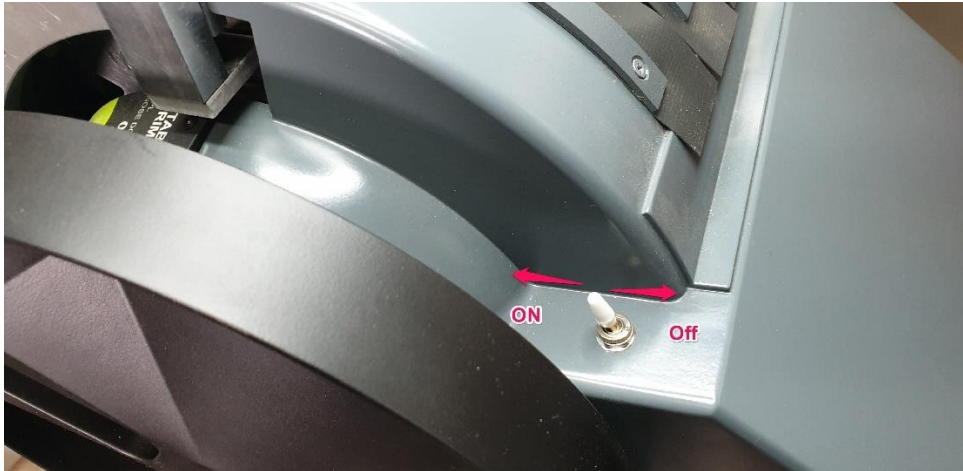


Change the installation folder in "C: CFY_TQ"



5. Press "Next" and follow installation instructions

6. When the installation is complete and the TQ is connected to the network, please switch on the power supply of the TQ. A small switch in front of the flaps lever.

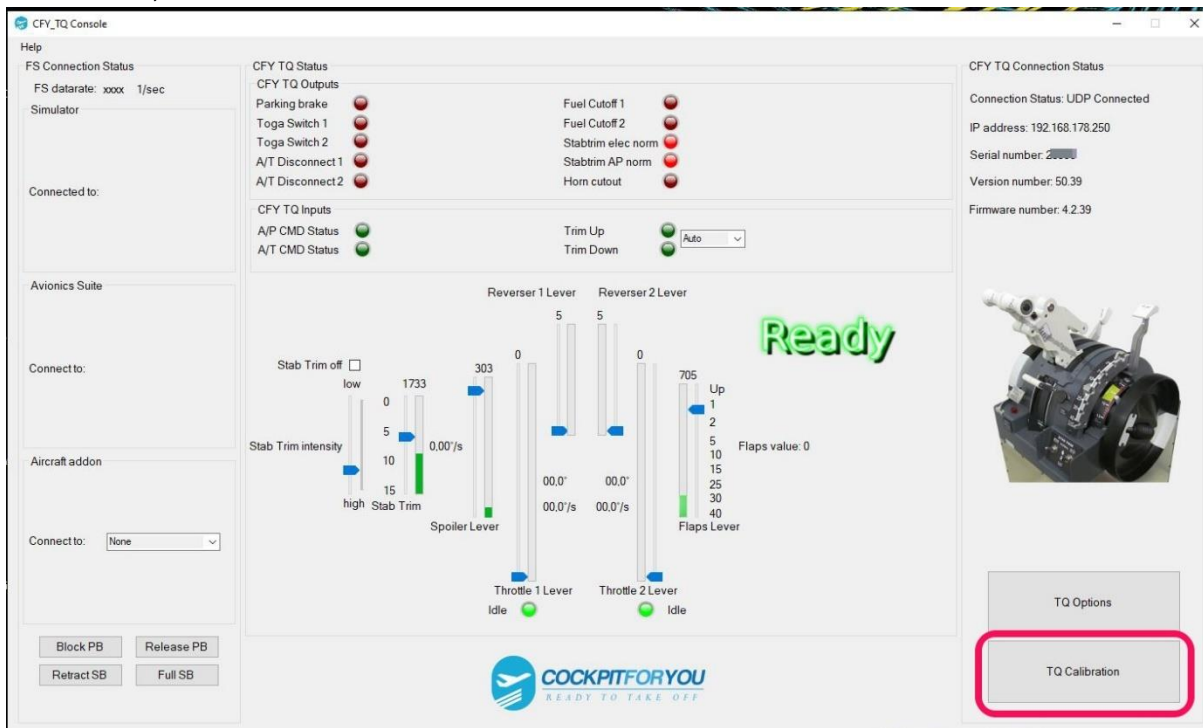


7. Start the CFY Console in the CFY_TQ folder.

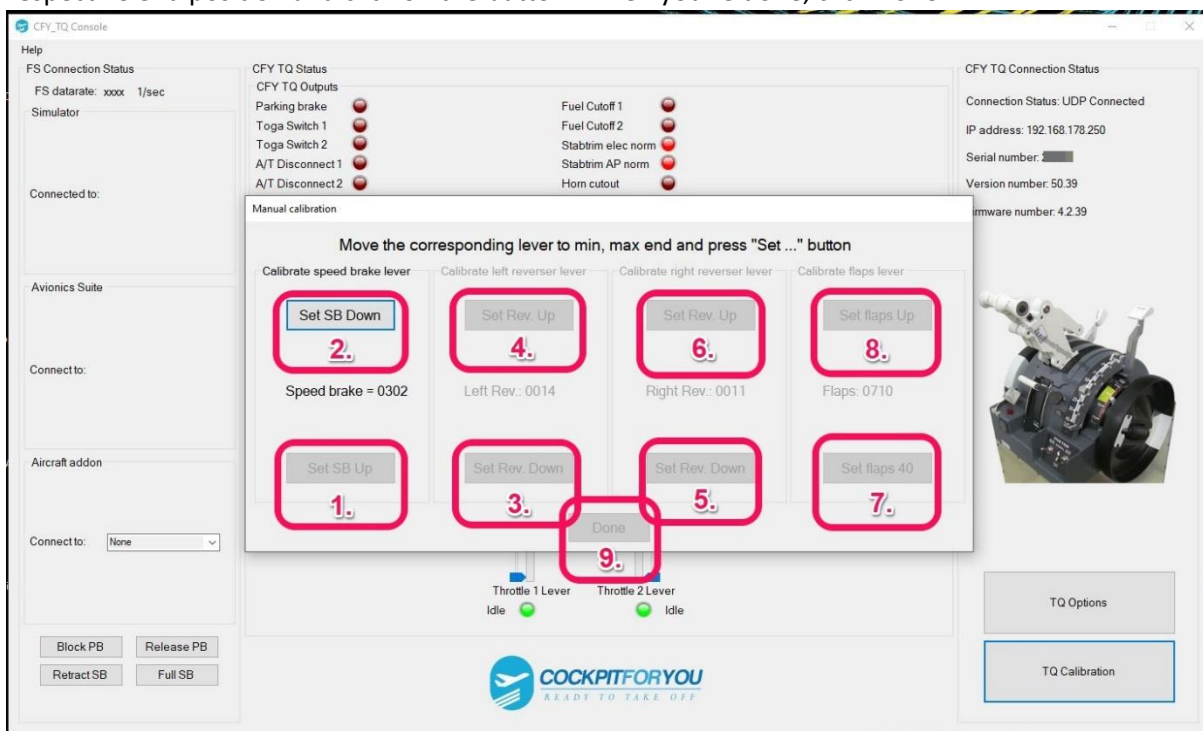
Dieser PC > Windows (C:) > CFY_TQ

Name	Änderungsdatum	Typ	Größe
737_Trim.wav	12.12.2017 18:16	WAV-Datei	193 KB
CFY Icon.ico	27.06.2016 12:52	IrfanView ICO File	146 KB
CFY Icon.png	27.06.2016 12:58	JPG-Datei	27 KB
CFY_TQ Console.exe	02.03.2021 10:14	Anwendung	1.750 KB
CFY_TQ Console.exe.config	29.04.2018 10:45	XML Configuration File	1 KB
CFY_TQ.log	20.03.2023 20:35	Textdokument	3 KB
CFY_TQ_CONFIG.xml	20.03.2023 20:35	XML-Dokument	2 KB
PoKeysDevice_DLL.dll	28.10.2016 13:10	Anwendungserweiter...	177 KB
PoKeysUpdate.exe	19.10.2016 05:35	Anwendung	1.322 KB
SharpDX.DirectInput.dll	30.05.2017 10:02	Anwendungserweiter...	153 KB
SharpDX.DirectSound.dll	30.05.2017 10:03	Anwendungserweiter...	56 KB
SharpDX.dll	30.05.2017 10:02	Anwendungserweiter...	271 KB
System.Net.Http.dll	28.05.2014 05:35	Anwendungserweiter...	82 KB

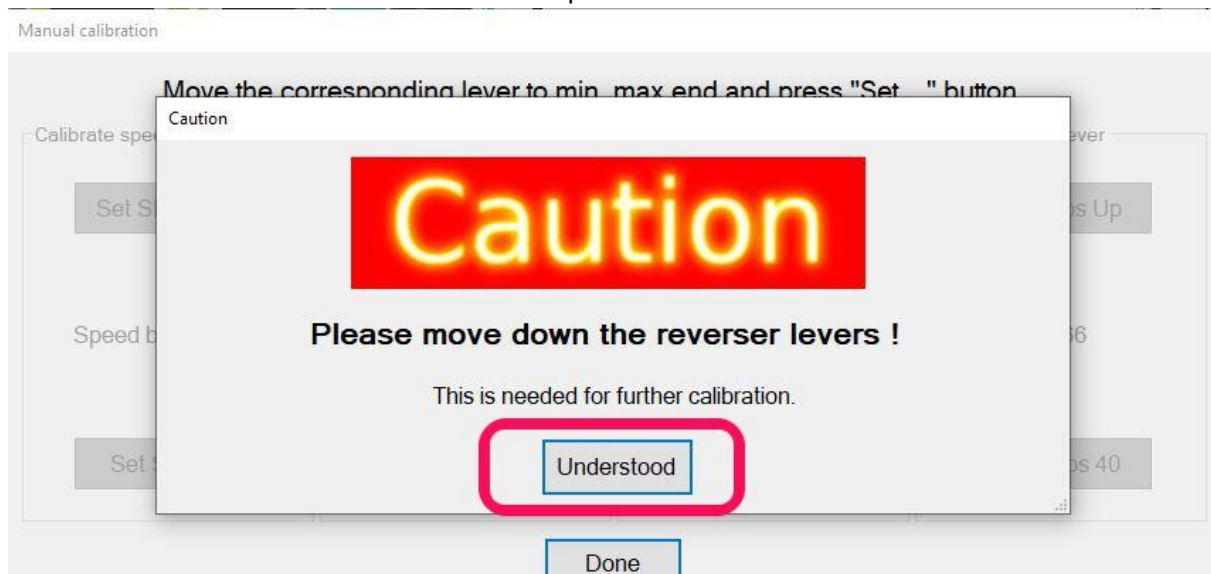
8. When you start the CFY Console for the first time, Calibration opens automatically. If this is not the case, click on the TQ Calibration button.



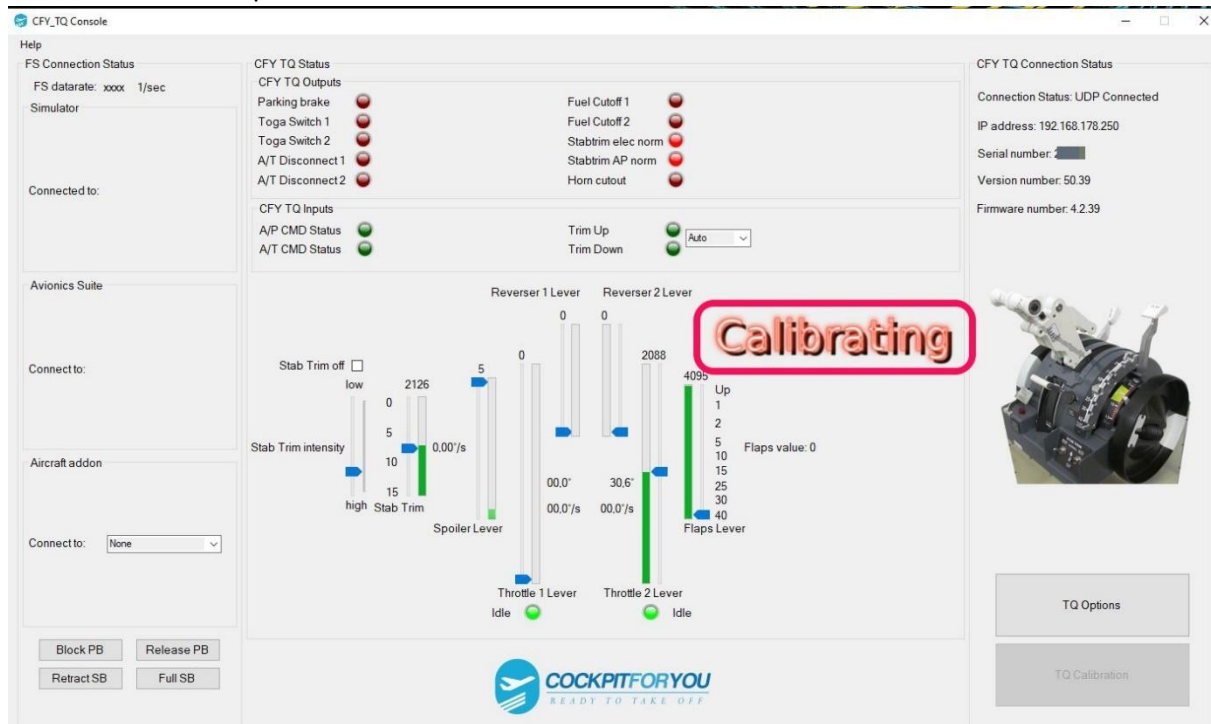
9. Now calibrate SpeedBrake, Rev 1, Rev 2 and Flaps in the order given. Bring the lever to the respective end position and click on the button. When you're done, click Done.



- 10.** Now the automatic calibration of the trim wheels and the thrust levers 1 and 2 begins. Please confirm that REV 1 and 2 are in position Down and Press "Understood"



- 11.** Now the TQ performs its automatic calibration.



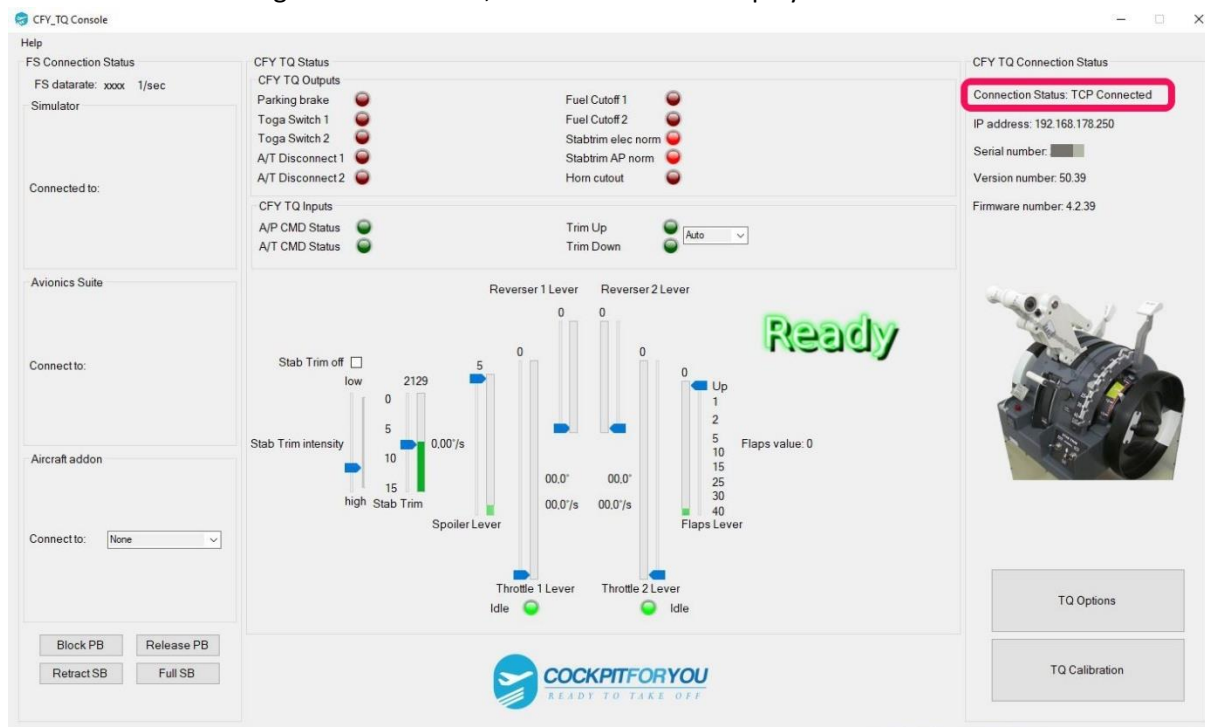
12. When the calibration is finished, the CFY Console will show Ready. Then click the TQ Options button.



13. Please switch from UDP Connection to TCP Connection and click the "Done" button. The CFY Console must then be restarted for this setting to take effect.

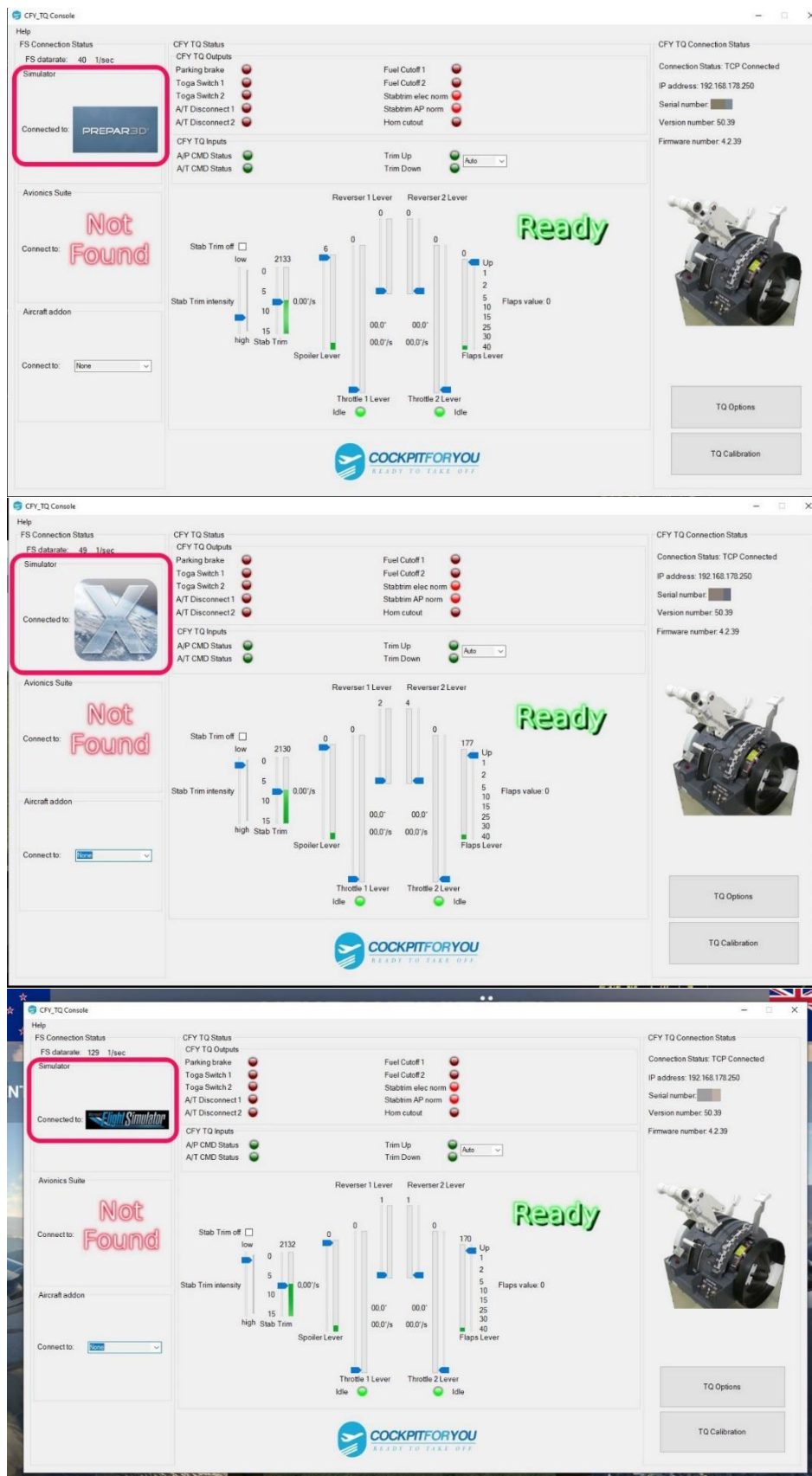


14. After restarting the CFY Console, TCP Connection is displayed.



15. Start your flight simulator, automatically recognized: FS2009, FSX all versions, P3D all versions, XPlane 10, 11, 12 and FS2020





The "TQ V3,V4,V5 " connects to your flight simulator

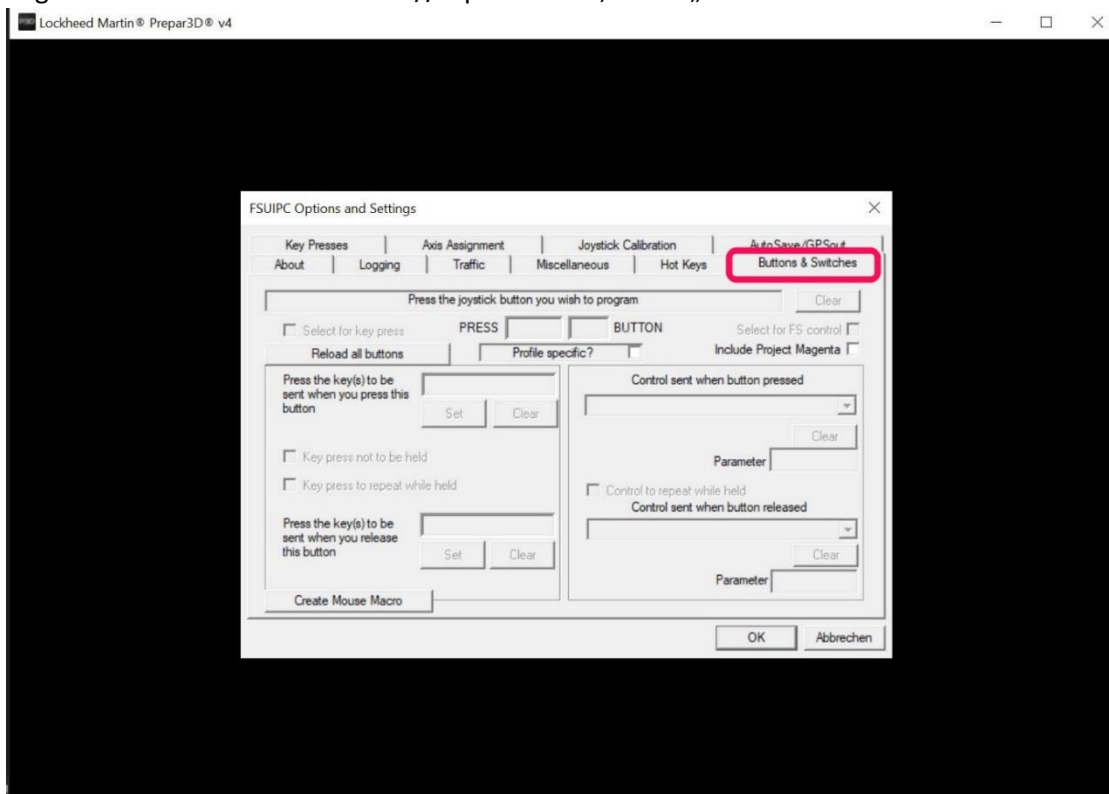
16. 18. The buttons on their yokes for trim up and down now need to be registered: Open FSUIPC or XPUICP.

17.

For

FS2009,FSX,P3D and FS2020

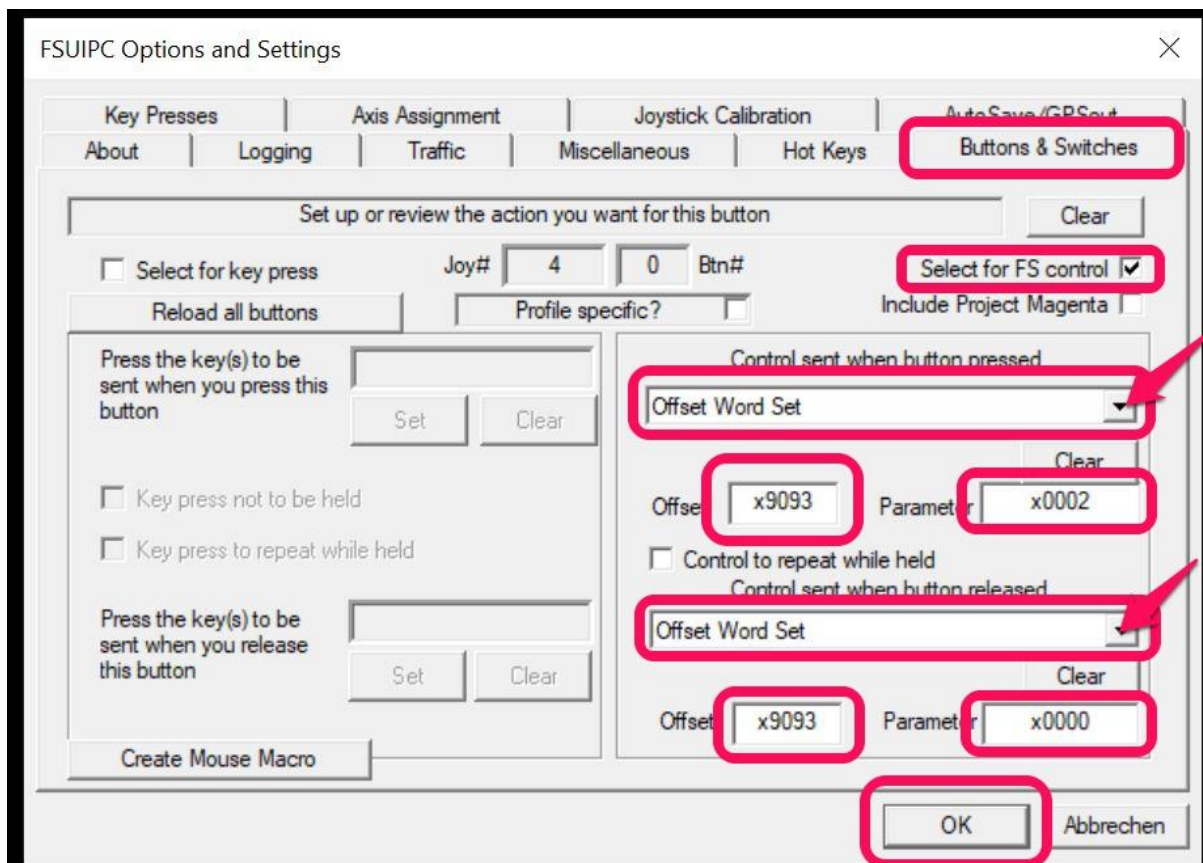
:Sign the Trim button on the Yoke // Open FSUIPC, select „Buttons + Switches“



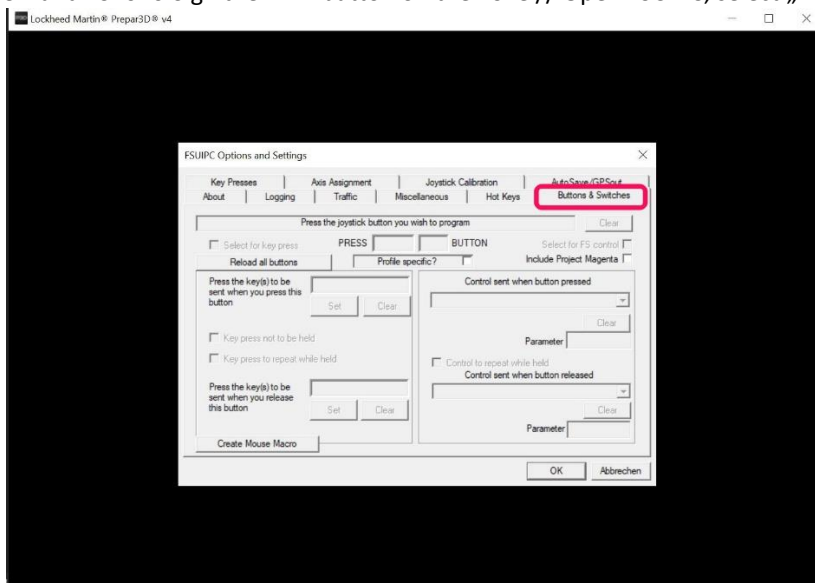
- Press the **Nose up** trim switch on your yoke Check the „Select for FS control“ box
- Select “Offset Word Set” from the list
- Set the first offset to **x9093** and the parameter to **2**

The Control sent when the button is released:

- Select “Offset Word Set” from the list
- Set the first offset to **x9093** and the parameter to **0**
- Press “OK” to save these changes

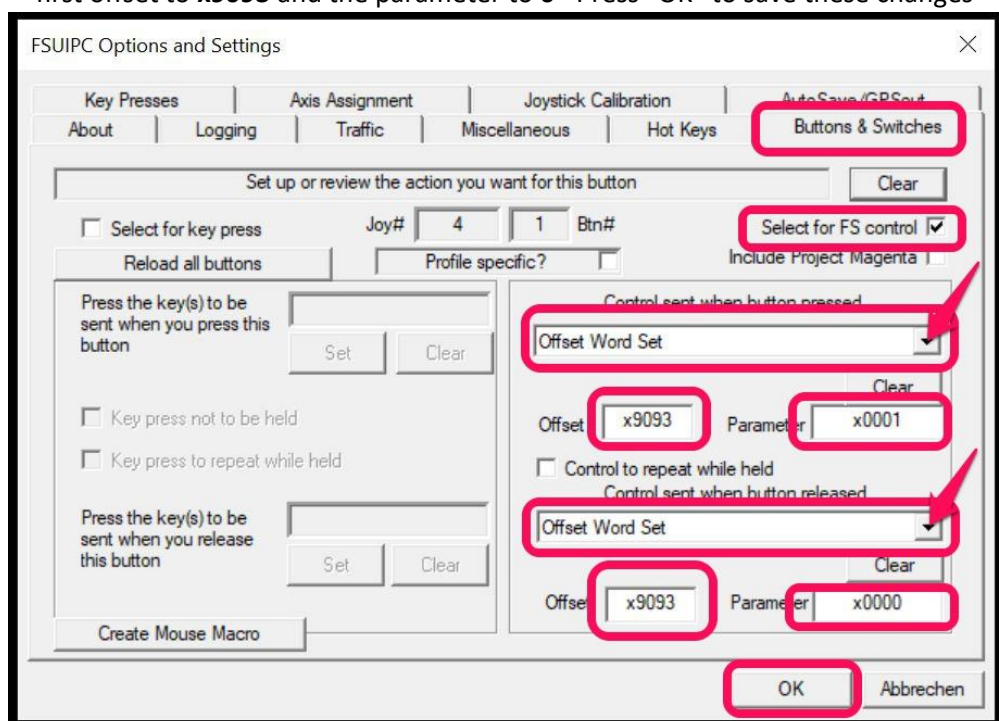


18. For FS2009,FSX,P3D and FS2020:Sign the Trim button on the Yoke // Open FSUIPC, select „Buttons + Switches“



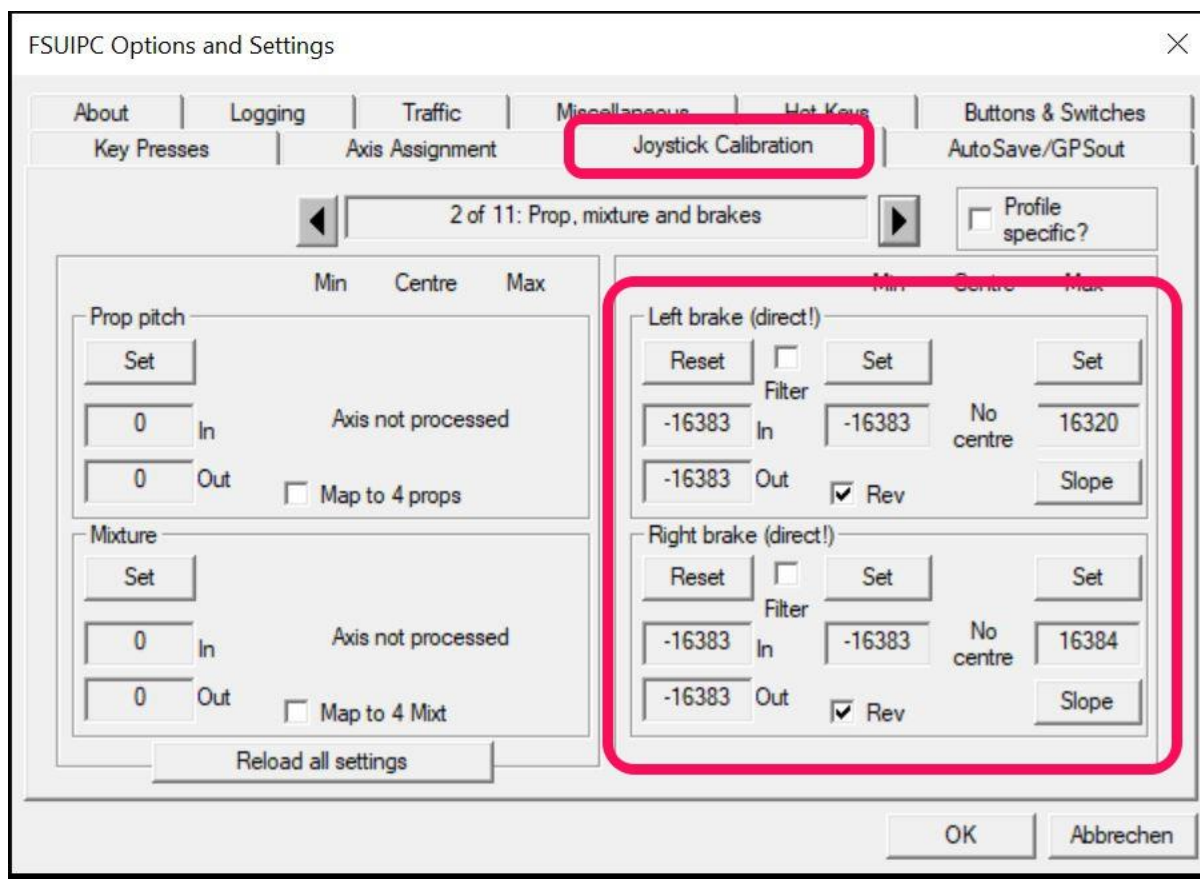
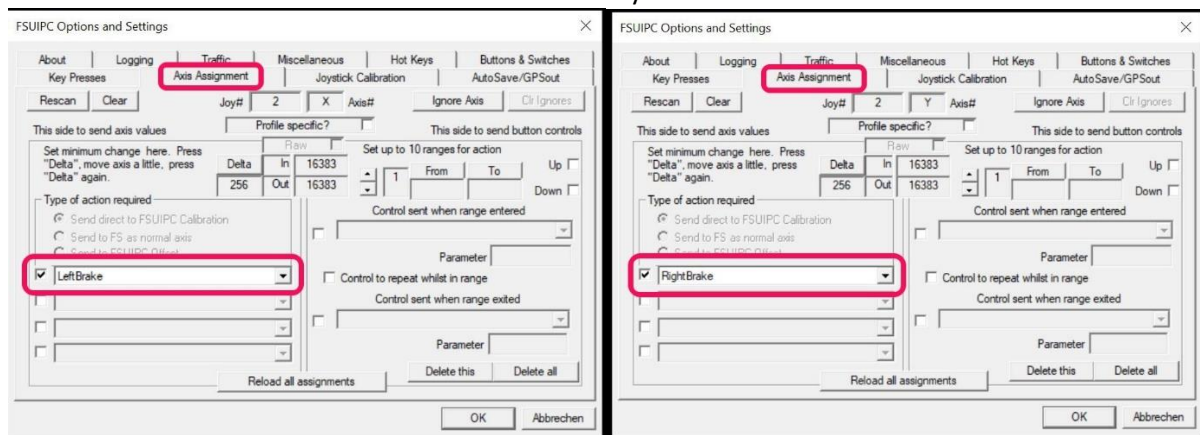


- Press the **Nose down** trim switch on your yoke Check the “Select for FS control” box
 - Select “Offset Word Set” from the list
 - Set the first offset to **x9093** and the parameter to **1**
- The Control sent when the button is released:** Select “Offset Word Set” from the list Set the first offset to **x9093** and the parameter to **0** Press “OK” to save these changes

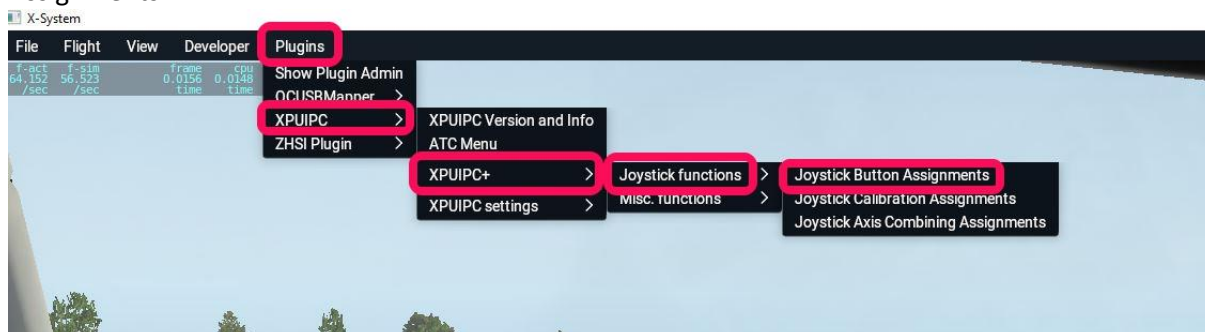


19. For FS2009, FSX, P3D and FS2020 :

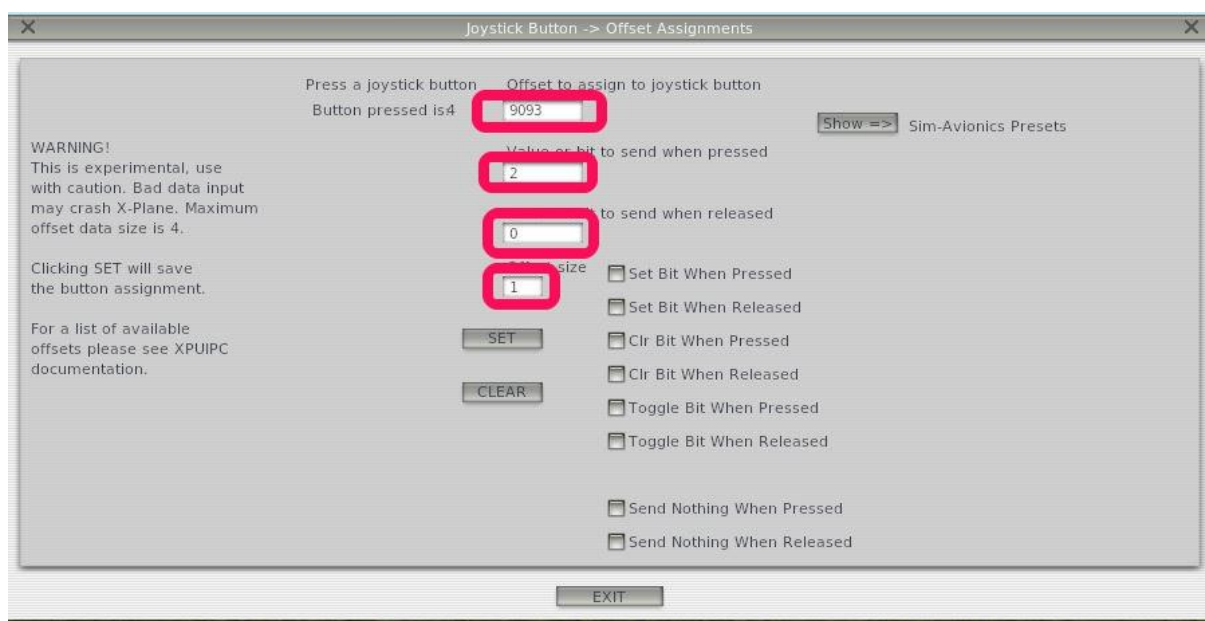
The brake pedals must be registered and calibrated in FSUIPC, since the logic for the parking brake is controlled by FSUIPC.



20. For **XPlane**: Sign the Trim button on the Yoke // Open XPUIPC, select „Joystick Button Assignments“



- Press the **Nose down** trim switch
- Offset to assign to joystick button is: 9093
Value or bit to send when pressed is: 2
Value or bit to send when released is: 0
Offset size is: 1





- Press the **Nose up** trim switch
- Offset to assign nto joystick button is: 9093
 Value or bitt o send when pressed is: 1
 Value or bitt o send when released is: 0
 Offset size is: 1

X
Joystick Button -> Offset Assignments
X

Press a joystick button

Button pressed is 5

WARNING!
This is experimental, use with caution. Bad data input may crash X-Plane. Maximum offset data size is 4.

Clicking SET will save the button assignment.

For a list of available offsets please see XPUIPC documentation.

Offset to assign to joystick button

9093

1

0

1

Offset size

Value to send when pressed

Value to send when released

Set Bit When Pressed

Set Bit When Released

Clr Bit When Pressed

Clr Bit When Released

Toggle Bit When Pressed

Toggle Bit When Released

Send Nothing When Pressed

Send Nothing When Released

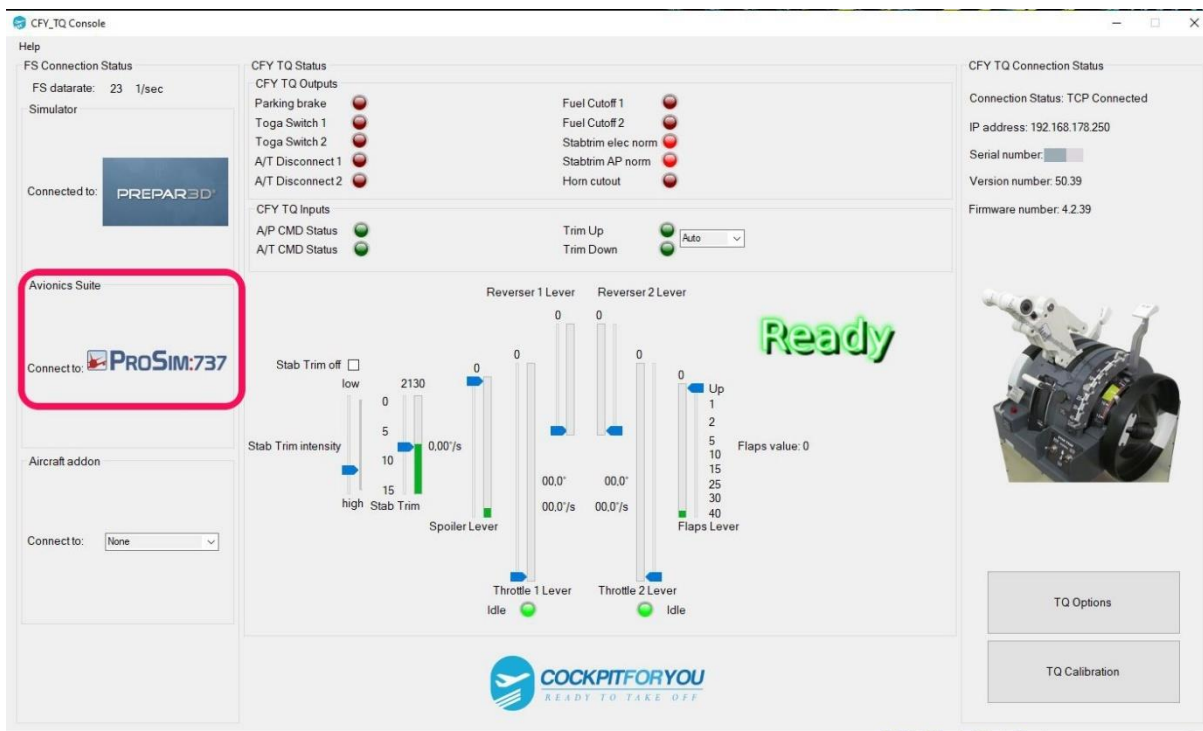
SET

CLEAR

Show => Sim-Avionics Presets

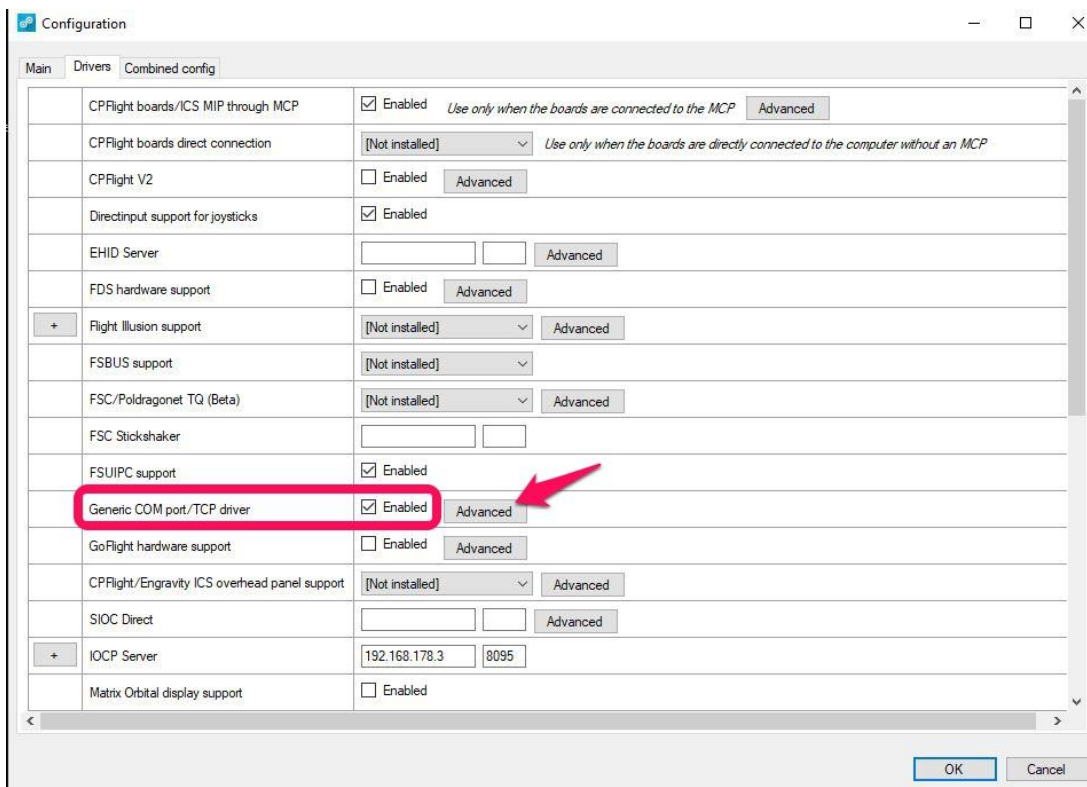
EXIT

21. Start your AddOn software, our software will automatically detect ProSim737, Project Magenta and SimAvionics

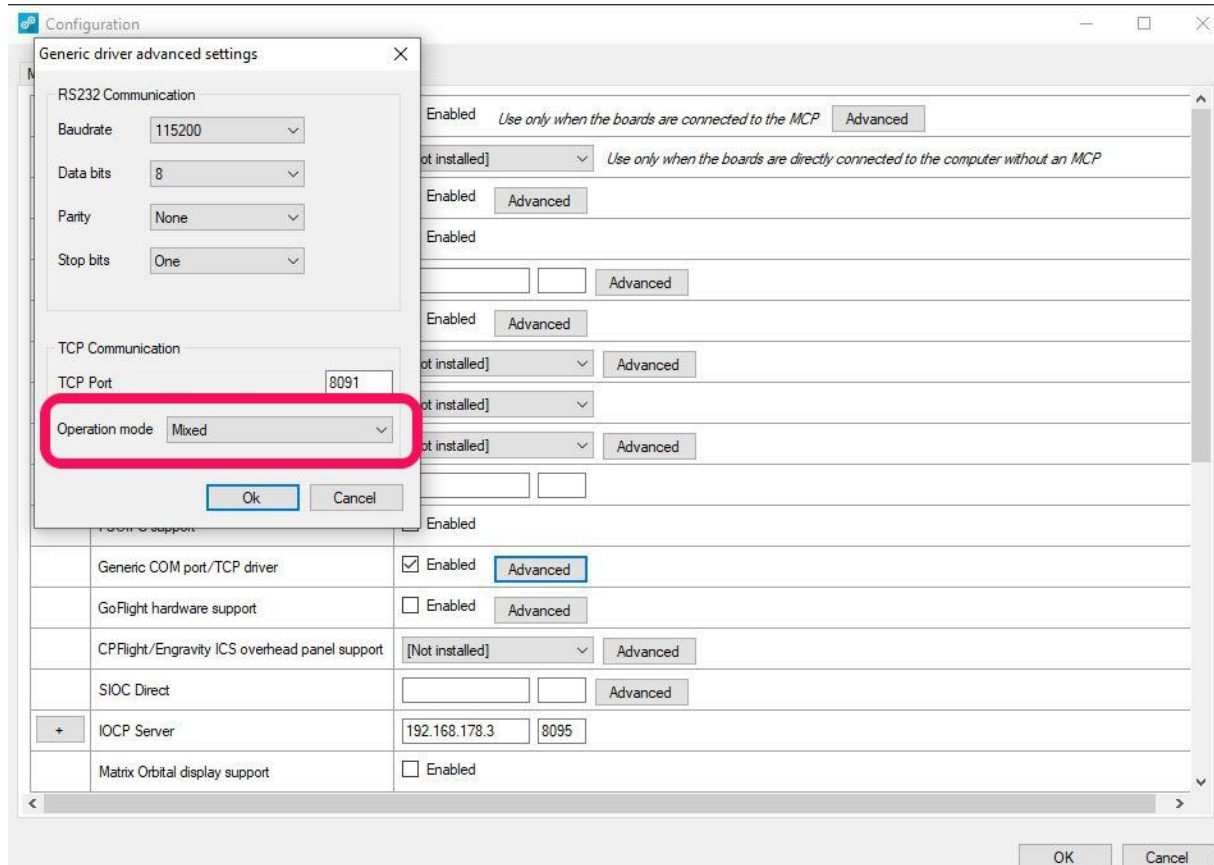


22. For Addon

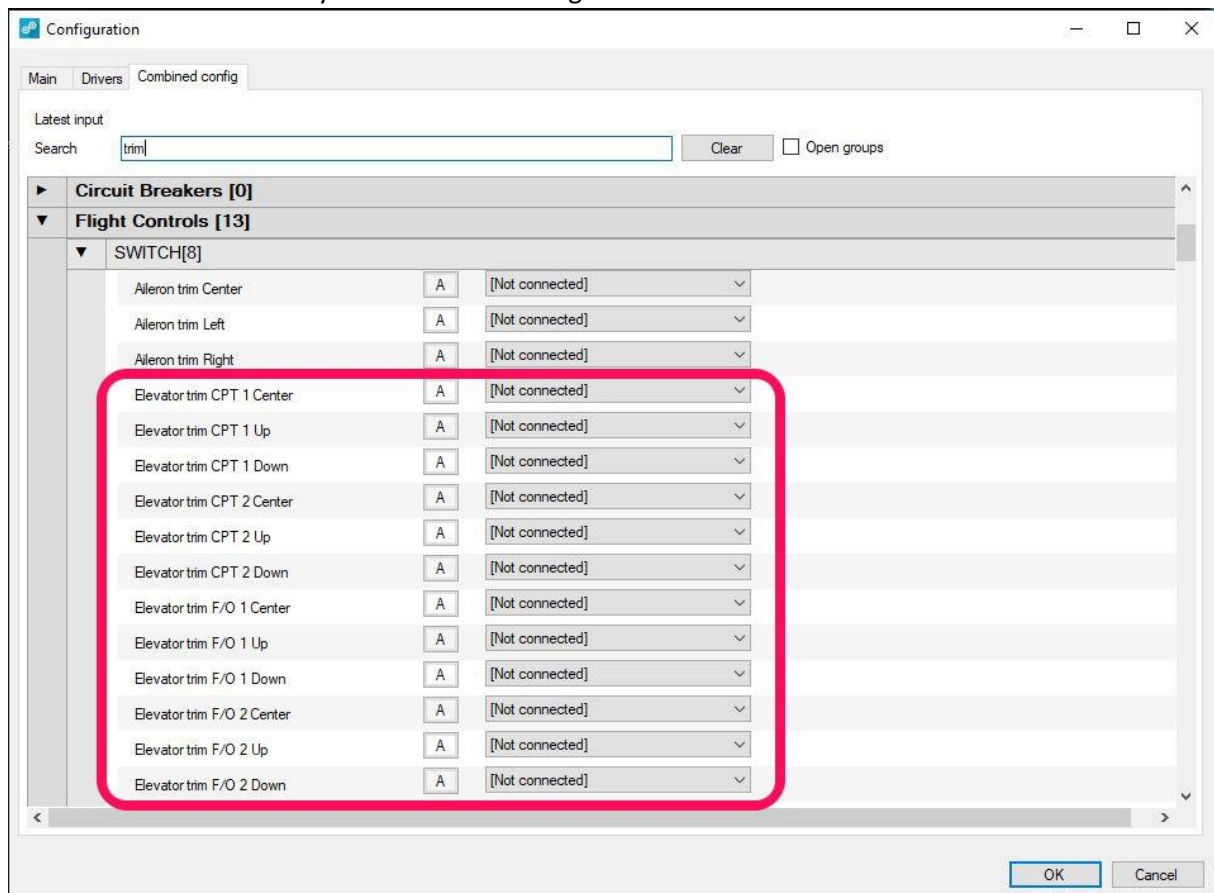
Setting in ProSim737 Config / Drivers
 Generic COM port/TCP driver => Enabled
 and then click the "Advanced" button



switch to Operation mode: "Mixed"

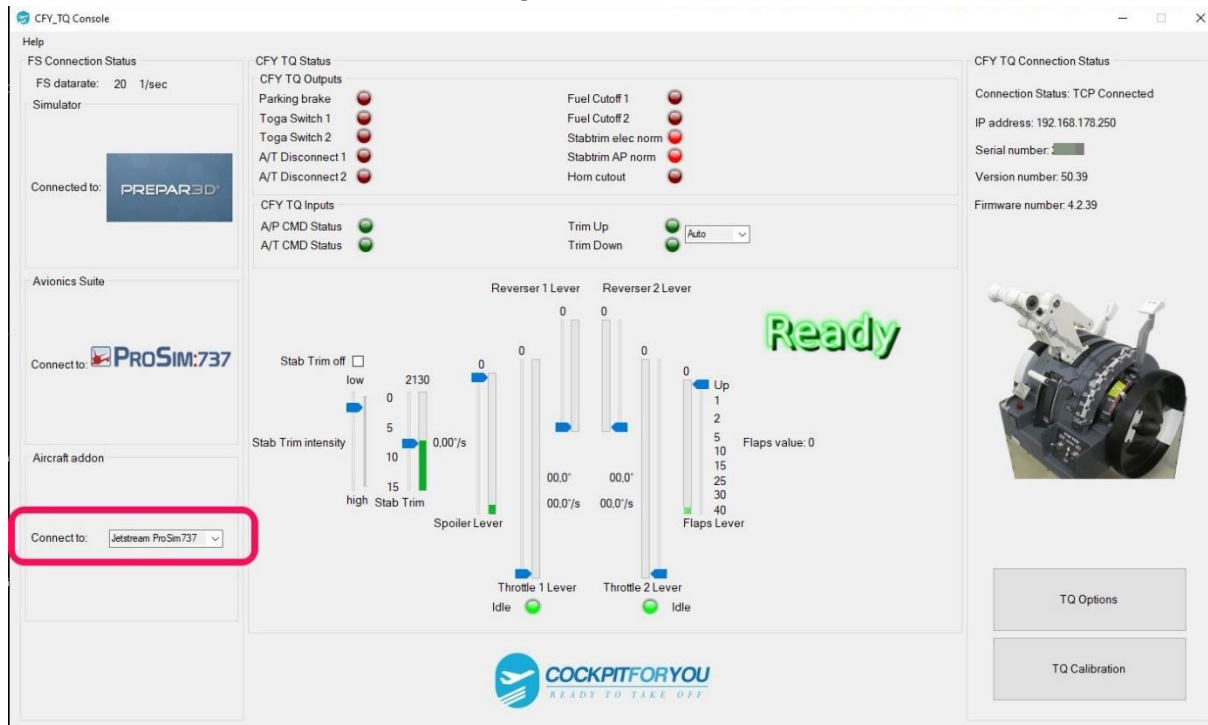


The trim switches on the yoke must NOT be registered in ProSim737.

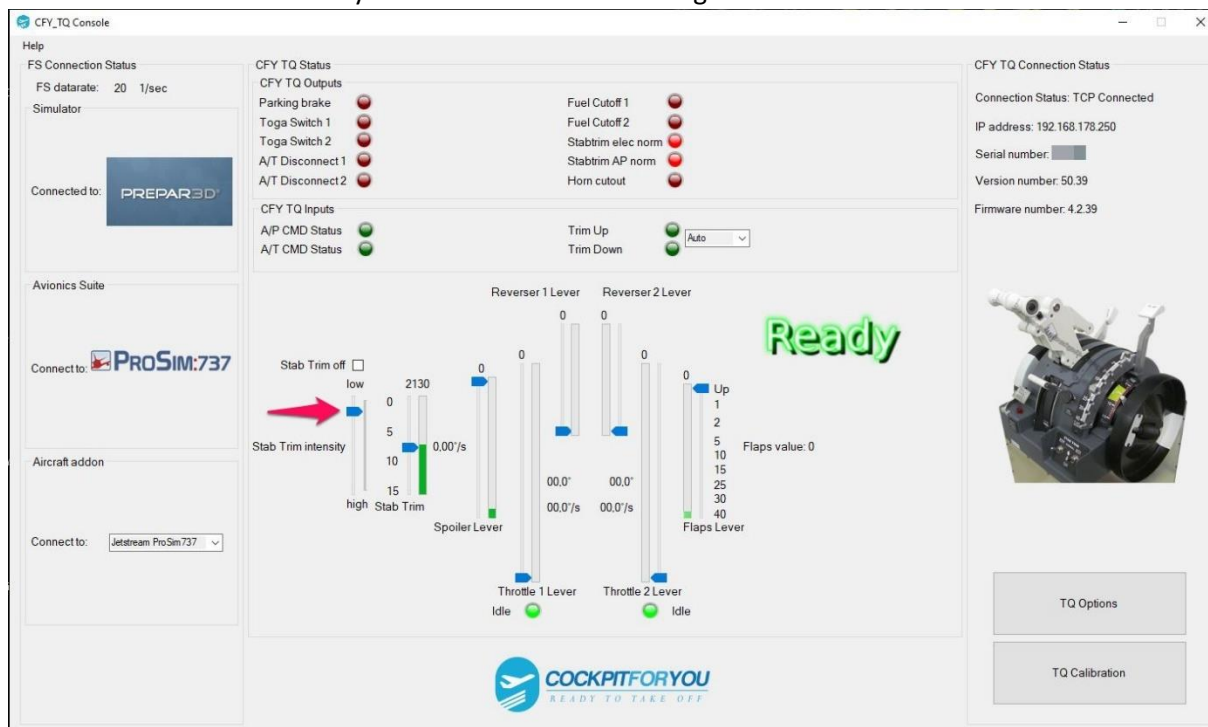


No switches and axes of the TQ have to be registered in ProSim.

In the CFY Console select the ProSim737 flight model.



Move the "Stab Trim intensity" slider as shown in the image.





- 23.** For Addon
No settings need to be made for this addon.



- 24.** For Addon

An FSUIPC connection is require, so the CFY controller software should either be run on the FS computer, or run on a remote computer with WideClient running.

Sim-Avionics Server Configuration

1) FSUIPC_IO.INI

Set Multi Function Offset

MULTI_FUNCTION=53FE

Remove 5418 offset from PARKING_BRAKE=5418

[FSUIPC_INPUTS]

PARKING_BRAKE=

ENGINE_L_FUEL_CONTROL_SWITCH=5452

ENGINE_R_FUEL_CONTROL_SWITCH=5453

Add Autothrottle output offsets

[FSUIPC_OUTPUTS]

COMMANDED_THROTTLE_L_POSITION=53E0

COMMANDED_THROTTLE_R_POSITION=53E2

THRUST_REF_MODE=53E4

2) Control Panel Tab

Enable FSUIPC Outputs	ON
-----------------------	----

3) Flight Controls 1 Tab

Parking Brake External	OFF
Flaps External	OFF
Gear External	ON
Elevator Trim via FSUIPC	OFF
Toe brakes release Parking Brake	OFF
Enable Simple Braking	OFF

4) Flight Controls 2 Tab

Main Throttles	FDS Pro Throttle/Sys Controller Axis/SIOC
Reversers	SIOC / Offsets 52DA and 52DC



CFY FS FSUIPC software
 ConfigConfigurationuration

1) FSUIPC > Axis Assignment

Add "Parking Brake" to Brake Axis

Detect Brake Axis

"Control sent when range entered" = Parking Brake

Up	OFF
Dn	ON

From = 95% of brake pedal

To = 100% of brake pedal

2) FSUIPC > Buttons

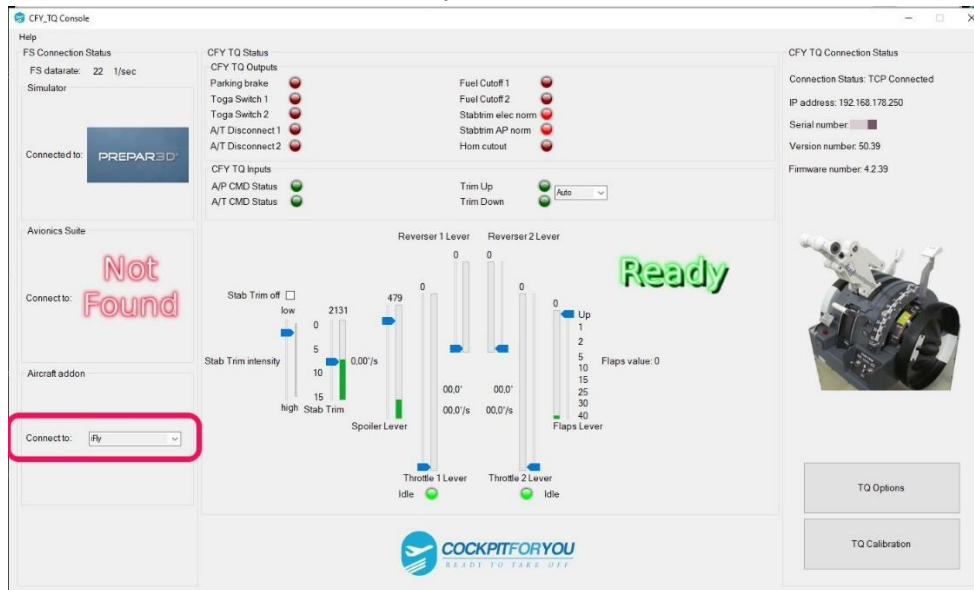
Trim Up	Offset Word Set	x9093 1 Repeat ON
	Offset Word Set	x9093 0
Trim Down	Offset Word Set	x9093 2 Repeat ON
	Offset Word Set	x9093 0



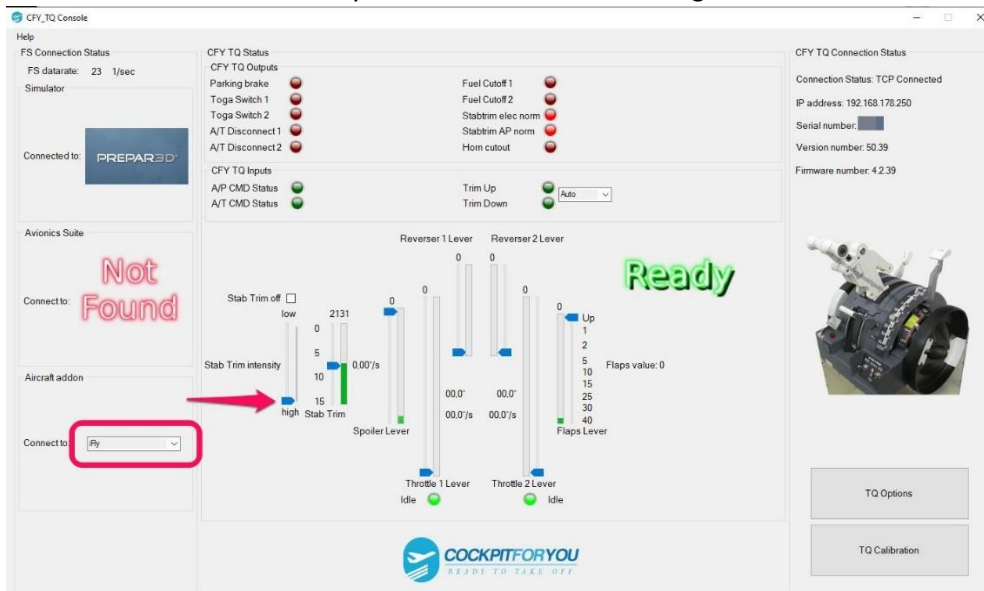


25. For flight model

- 1) "iFly to FSUIPC" must be installed and started.
- 2) Switch Aircraft addon: Connect to: iFly



- 3) Move the "Stab Trim intensity" slider as shown in the image.



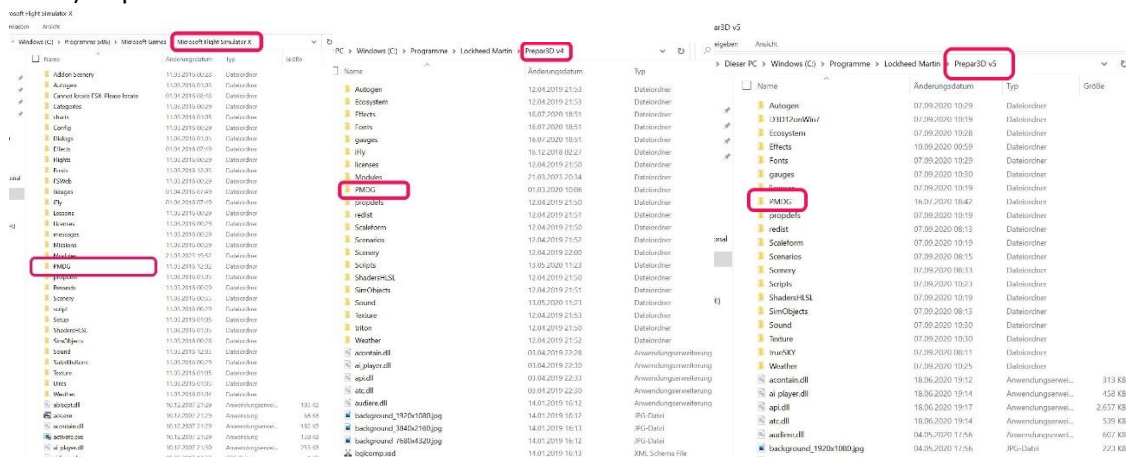
26. For flight model



Current FSUIPC4 version! FSUIPC4 or FSUIPC5 or FSUIPC6 Current SimConnect version!
 For FS2020 you need the latest version FSUIPC7.

Configuring the PMDG ini open Windows Explorer

1) open PMDG folder



2) Open the PMDG 737 NGX or PMDG 737 NGXu folder.

er PC > Windows (C:) > Programme > Lockheed Martin > Prepar3D v5 > PMDG

Name	Änderungsdatum	Typ
DEM	10.08.2020 21:26	Datei
dlls	10.08.2020 21:26	Datei
EFB	16.07.2020 18:42	Datei
FLIGHTPLANS	16.07.2020 18:42	Datei
Icons	10.08.2020 21:26	Datei
NavData	10.08.2020 21:26	Datei
PMDG 737 NGX	16.07.2020 18:42	Datei
PMDG 737 NGXu	10.09.2020 00:28	Datei
SIDSTARS	10.08.2020 21:29	Datei
WX	10.08.2020 21:29	Datei
PMDG_Interface.ini	21.03.2023 20:00	Konfigu
rainmaker_log.txt	10.09.2020 00:59	Textdok

3) Open the 737NGXu_Options.ini or 737NGX_Options.ini file

ndows (C:) > Programme > Lockheed Martin > Prepar3D v5 > PMDG > PMDG 737 NGXu

<input type="checkbox"/> Name	Änderungsdatum	Typ
Aircraft	10.08.2020 21:30	Datei
Flight Manuals	10.08.2020 21:26	Datei
PanelState	15.08.2020 16:03	Datei
SDK	10.08.2020 21:26	Datei
737NGXu_Changelist.txt	06.02.2020 00:40	Textd
737NGXu_debug_log.txt	10.09.2020 00:59	Textd
737NGXu_Log.txt	09.09.2020 14:56	BAK-I
737NGXu_Options.ini	10.09.2020 00:34	Konfig
737NGXu_Shortcuts.ini	29.02.2020 23:30	Konfig
README_PMDG_737NGXu_Base.txt	23.05.2020 15:35	Textd

4) If this text is not present in the ini file, insert this text.

[SDK]

EnableDataBroadcast=1

```

737NGXu_Options.ini - Editor
Datei Bearbeiten Format Ansicht Hilfe
SoundGroupValue.5=1.00
SoundGroupValue.6=1.00
[Aircraft Config]
FixedConfig=
[Panel State]
StartupPanelState=
[SDK]
EnableDataBroadcast=1
[Hydraulics]
Volume Sys.0=0.000000
Density Sys.0=0.000000
Temp Sys.0=500.000000
Volume Sys.1=0.000000
Density Sys.1=0.000000
Temp Sys.1=500.000000
SU Vol.0=0.000000
SU Vol.1=0.000000
SU Vol.2=0.000000
SU Vol.3=0.000000
SU Vol.4=0.000000
SU Vol.5=0.000000
SU Vol.6=0.000000

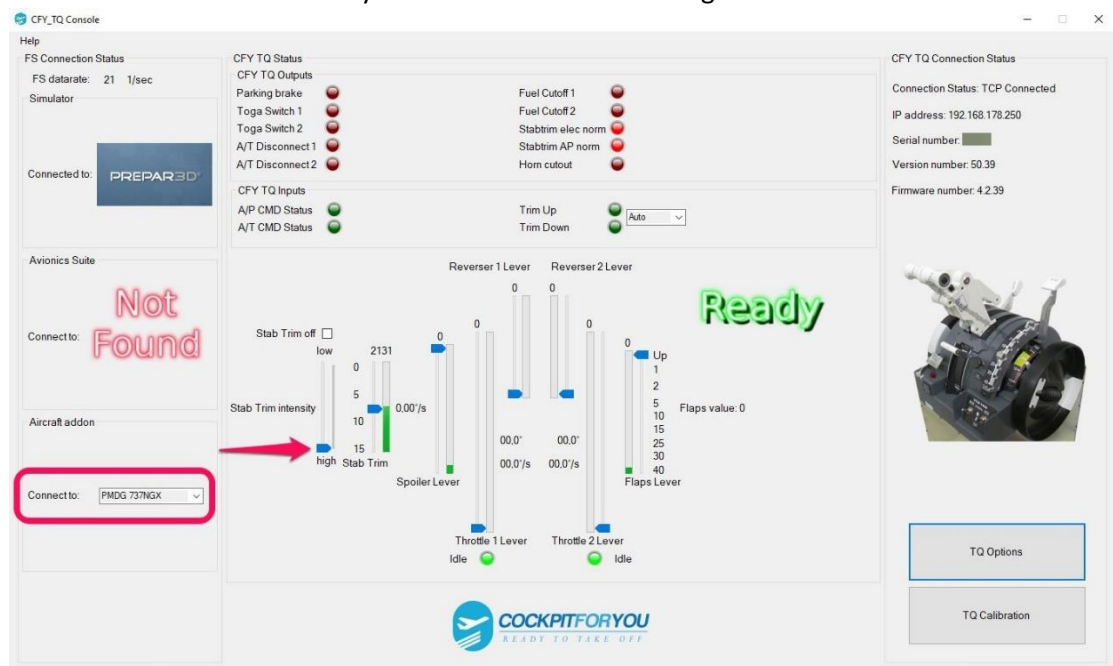
```

5) Save and close the file

6) Switch Aircraft addon: Connect to: PMDG 737NGX



7) Move the "Stab Trim intensity" slider as shown in the image.



“Sit back relax and enjoy your flight.”

This is it. By now your 737 throttle quadrant should be up and running. In case you have any further questions or you are experiencing difficulties, please do not hesitate to contact us via email.

Torsten Müller

Berlin, Germany 2023



COCKPITFORYOU

READY TO TAKE OFF